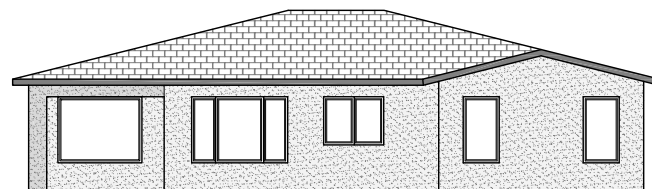
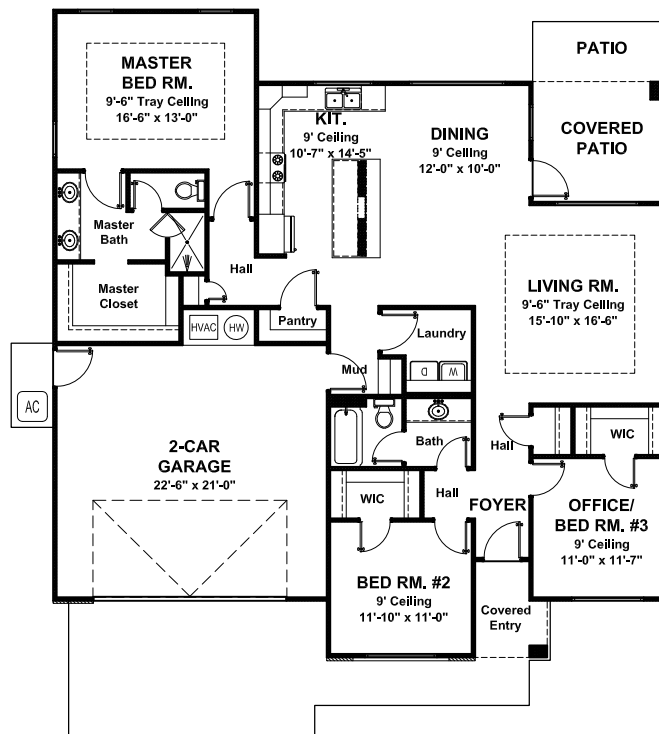




Main Living Area = ..... 1,746 Sq. Ft.  
 Garage = ..... 503 Sq. Ft.  
 Covered Entry = ..... 43 Sq. Ft.  
 Covered Patio = ..... 113 Sq Ft.  
 Dimensions = ..... 51'-3" (w) x 54'-0" (d)  
 FNDN: Slab                      Exterior Walls: 2x4

**Style: Modern - 3 Bedroom - 2 Bath - 2 Car Garage**

This clean contemporary plan has a large shed roof accentuating the entry. Two toned stucco with control joints really highlight the signature style of this home. Interior spaces are roomy and functional. The spacious master suite is split from the secondary bedrooms allowing privacy and space. The master suite features a tray ceiling while all bedrooms provide walk-in closets. Settle in to comfortable living on your covered patio off the dining room.



**Back Elevation**